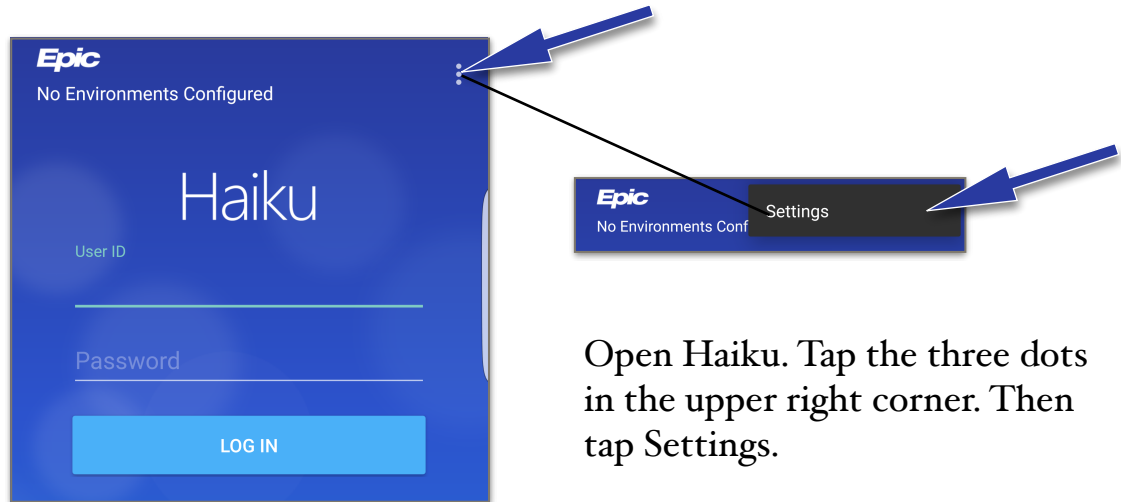


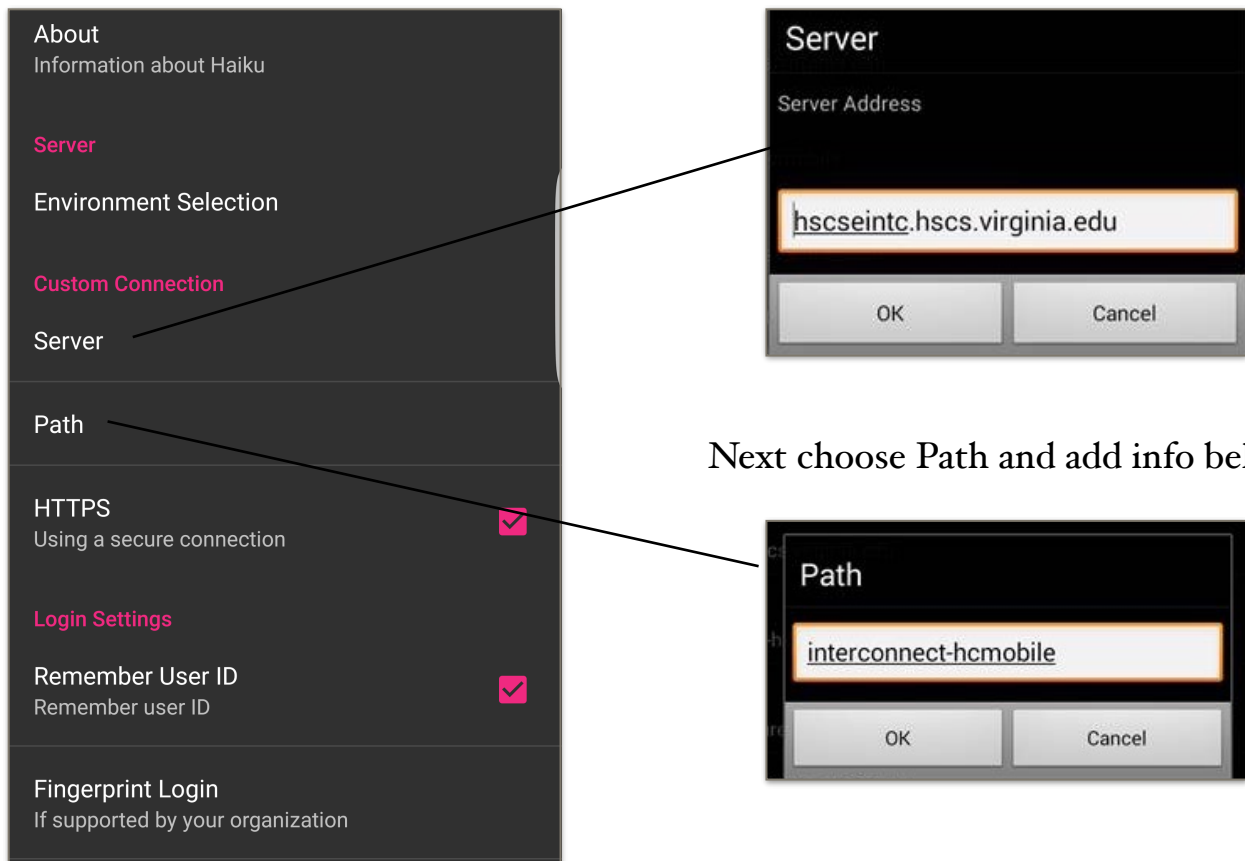
Android Setup for Haiku

The device to be configured must be on hscs-wireless via a MobileIron supplied connection or utilizing a VPN connection prior to attempting this configuration.



Open Haiku. Tap the three dots in the upper right corner. Then tap Settings.

Choose Server and type in the address seen here.



Next choose Path and add info below.

Now return to the main screen of the app and login with Health System user ID and password