

**To All Medical
Laboratory Users:**

**This edition of the Lab
Med Update has the
following articles:**

- Specimen Tube Labeling,
Pgs. 1 - 2
- **EPiC** Tip Sheet – How to
Use the Procedure
catalog, Pg. 3 - 5

**IF YOU HAVE AN ARTICLE(S)
YOU WOULD LIKE TO SHARE
CONTACT:**

Terri Workman Proffitt
434-924-5198/989-5546

EMAIL:

Twp3q@virginia.edu

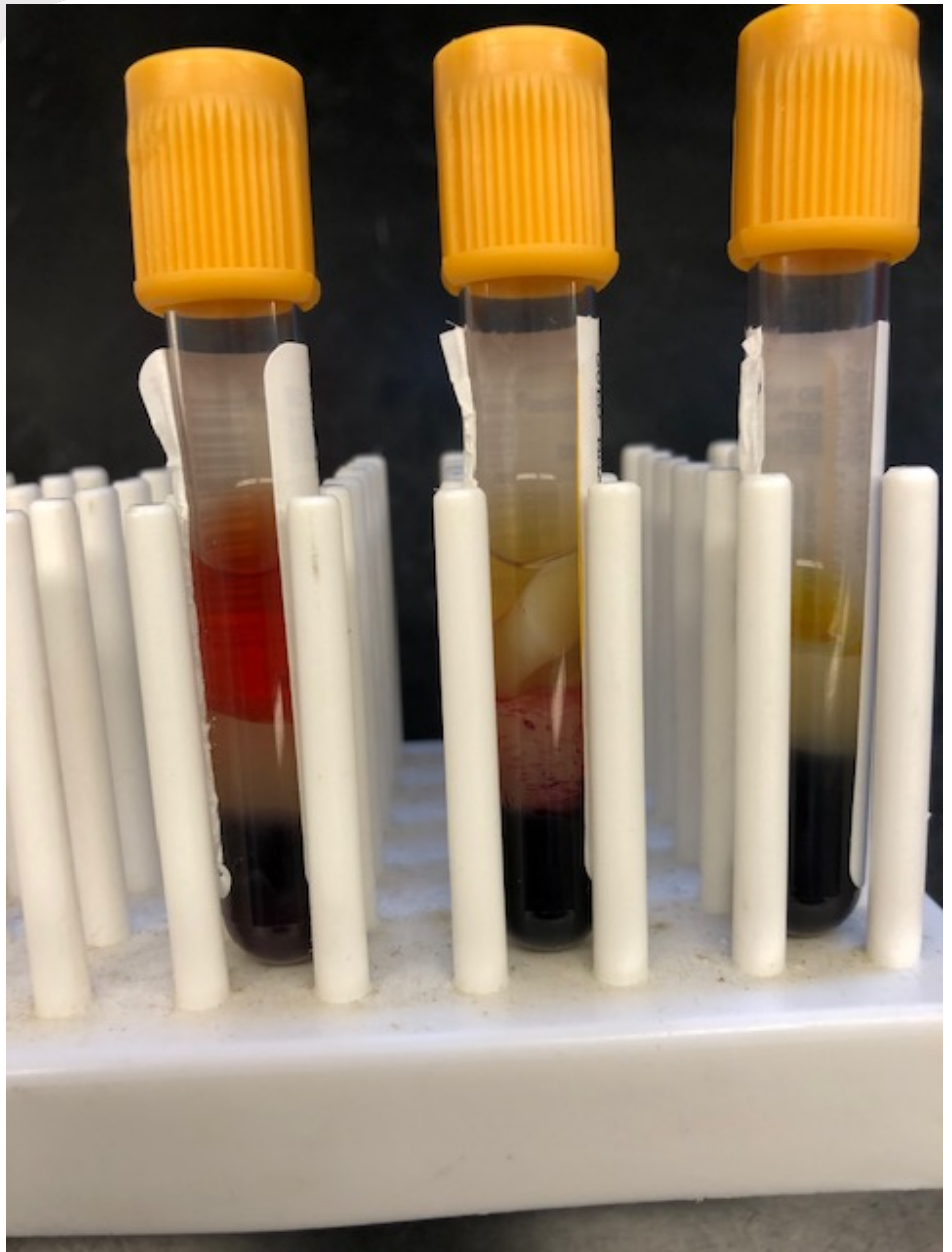


MEDICAL LABORATORIES

Laboratory Medicine Update January 2021

Specimen Tube Labeling

When placing labels on blood collection tubes please leave a window into the specimen. This allows the laboratory team to assess and address any issues that may impact the quality of the result or the uptime of the instruments. The picture below highlights how important the ability to easily view the specimen is prior to analysis. The first specimen has hemolysis, the second tube has a clot, and the third tube has very little serum. Our analytical instruments use fixed pipet probes to perform level sense and aspiration. If a clot is present or too little specimen, the probe may aspirate the clot or go into the gel barrier and clog the probe. Either example can cause instrument issues and a delay in result reporting.



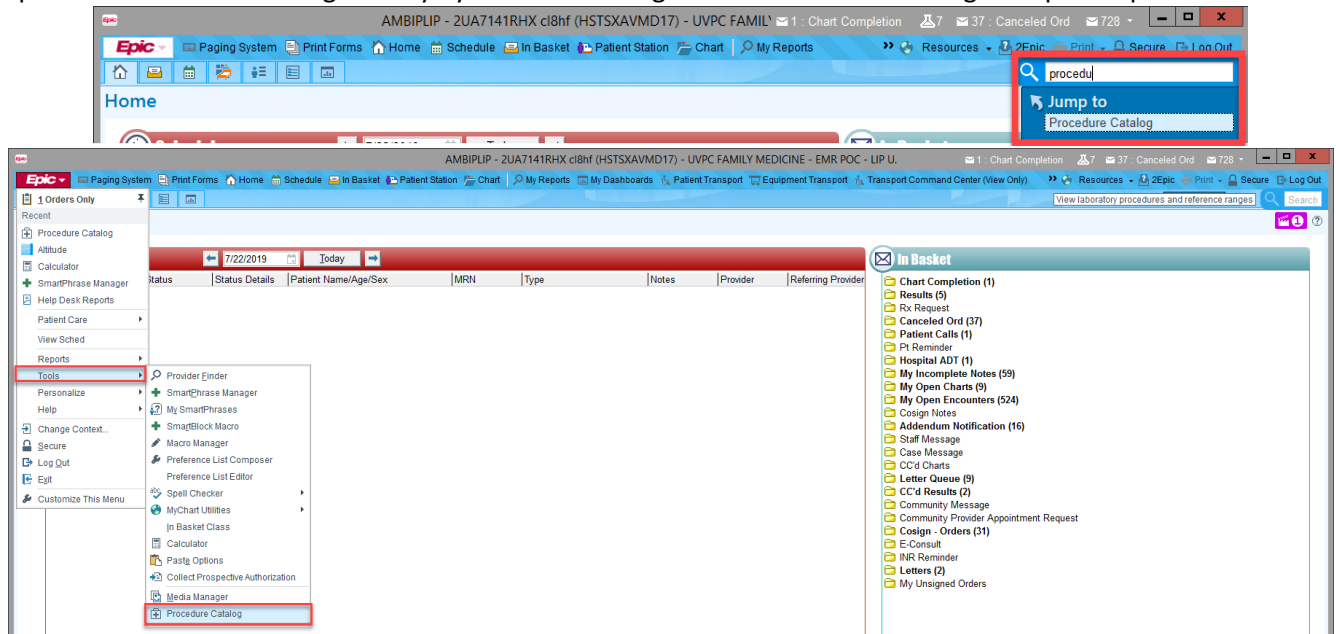
EPIC Tip Sheet – How to Use the Procedure Catalog

See EPIC Tip Sheet on next two pages.

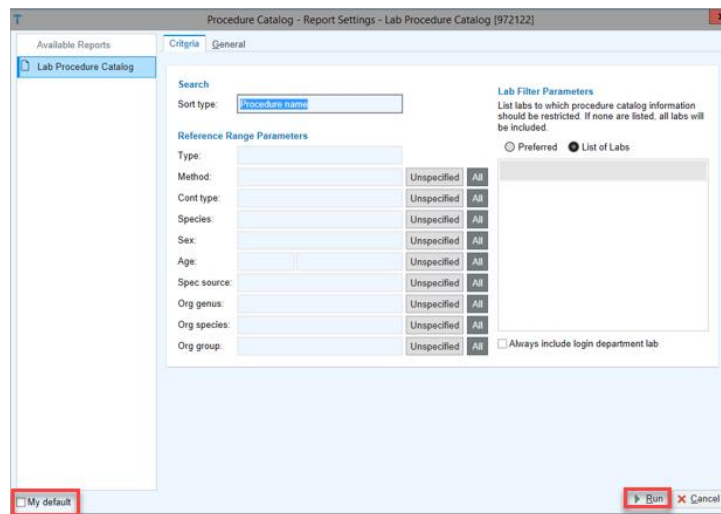
How to Use the Procedure Catalog

The Procedure Catalog can be used to find information about laboratory tests, to include collection requirements, special instructions, reference ranges, methodology, testing schedule, and shipping/handling instructions. The shipping/handling instructions are meant for lab personnel only.

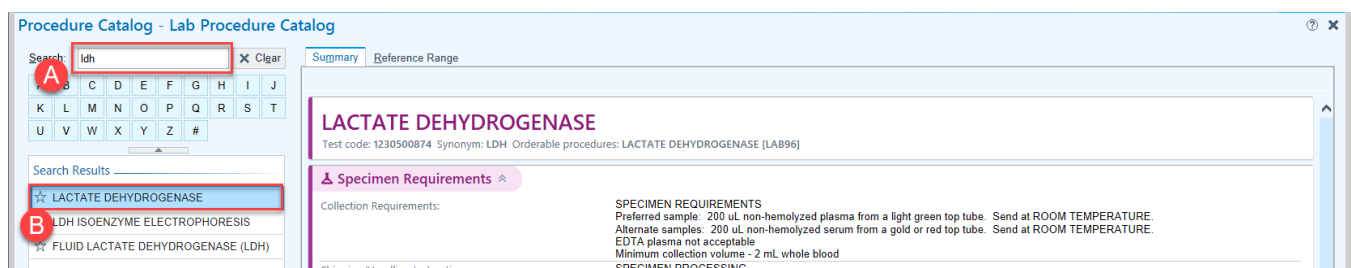
1. Open the Procedure Catalog Activity by either searching in the Search Bar or using the Epic Dropdown Menu.



2. The first time you open the Procedure Catalog you should check the **My Default** box and select **Run**.



3. (A) Use Search field to enter the name of desired test, then (B) select a test within the Search Results.



4. Collection information and special instructions (if applicable) will populate under the **Summary** tab.

Procedure Catalog - Lab Procedure Catalog

Search:

Search Results:

- LACTATE DEHYDROGENASE
- LDH ISOENZYME ELECTROPHORESIS
- FLUID LACTATE DEHYDROGENASE (LDH)

LACTATE DEHYDROGENASE
Test code: 1230500874 Synonym: LDH Orderable procedures: LACTATE DEHYDROGENASE [LAB96]

Specimen Requirements

Collection Requirements: **SPECIMEN REQUIREMENTS**
Preferred sample: 200 uL non-hemolyzed plasma from a light green top tube. Send at ROOM TEMPERATURE.
Alternate samples: 200 uL non-hemolyzed serum from a gold or red top tube. Send at ROOM TEMPERATURE.
EDTA plasma not acceptable.
Minimum collection volume - 2 mL whole blood

Shipping/Handling Instructions: **SPECIMEN PROCESSING**
Centrifuge at room temperature

SPECIMEN STABILITY
Whole blood stability at room temperature is 1 hour
Plasma and serum stability as follows:
Stable at room temperature for 7 days
Can add on if plasma or serum has been kept at room temperature

TEST METHODOLOGY
Lactate and NAD are converted to pyruvate and NADH by the action of LD. NADH strongly absorbs light at 340 nm, whereas NAD does not. The rate of increase in absorbance at 340 nm is directly proportional to the LD activity in the sample.

TESTING SCHEDULE
Performed as requested: 24 hours per day

Performing Locations: **SPECIAL INSTRUCTIONS**
Keep plasma at room temperature until testing. DO NOT add on if sample has been refrigerated or frozen.
UVA CLINICAL LABORATORIES: AUTOMATION CHEMISTRY
UVA CANCER CENTER LABORATORY: CC CHEMISTRY LAB

Container Type

Laboratory	Container	Default	Min. Volume
UVA CLINICAL LABORATORIES	LT GREEN LIHEP	Yes	0.2
	GOLD TOP SST		0.2
	RED TOP NO ADDITIVE		0.2
UVA CANCER CENTER LABORATORY	LT GREEN LIHEP	Yes	0.2
	GOLD TOP SST		0.2
	RED TOP NO ADDITIVE		0.2

Turnaround Time

Laboratory	Priority	Rule	TAT	Offset
UVA CLINICAL LABORATORIES	Routine	LAB PATIENT CLASS OR DEPARTMENT IS EMERGENCY	60 Minutes	5 Minutes
	STAT		4 Hours	20 Minutes
UVA CANCER CENTER LABORATORY	Routine	LAB PATIENT CLASS OR DEPARTMENT IS EMERGENCY	60 Minutes	15 Minutes
	STAT		4 Hours	20 Minutes

5. Select the **Reference Range** tab to view reference ranges.

Procedure Catalog - Lab Procedure Catalog

Search:

Search Results:

- LACTATE DEHYDROGENASE
- LDH ISOENZYME ELECTROPHORESIS
- FLUID LACTATE DEHYDROGENASE (LDH)

LACTATE DEHYDROGENASE
Test code: 1230500874 Synonym: LDH Orderable procedures: LACTATE DEHYDROGENASE [LAB96]

Reference Range

Type: Method: Unspecified Cont type: Unspecified Species: Unspecified
Sex: Unspecified Age: Unspecified Spec source: Unspecified
Org genus: Unspecified Org species: Unspecified Org group: Unspecified

LACTATE DEHYDROGENASE

Age	Valid Checking	Abnormality - Abnormal	Reference Range
0 up to 1 Months	>=8 U/L	<200 or >465 U/L	200-465 U/L
1 Months up to 18 Months	>=8 U/L	<200 or >450 U/L	200-450 U/L
18 Months up to 11 Years	>=8 U/L	<165 or >430 U/L	165-430 U/L
11 Years up to 17 Years	>=8 U/L	<127 or >287 U/L	127-287 U/L
17 Years up to Unspecified	>=8 U/L	<125 or >250 U/L	125-250 U/L

LACTATE DEHYDROGENASE CALC

Age	Valid Checking	Abnormality - Abnormal	Reference Range
0 up to 1 Months	>=8 U/L	<200 or >465 U/L	200-465 U/L
1 Months up to 18 Months	>=8 U/L	<200 or >450 U/L	200-450 U/L
18 Months up to 11 Years	>=8 U/L	<165 or >430 U/L	165-430 U/L
11 Years up to 17 Years	>=8 U/L	<127 or >287 U/L	127-287 U/L
17 Years up to Unspecified	>=8 U/L	<125 or >250 U/L	125-250 U/L

Vitros LDH

This component has no reference ranges set up for the indicated search criteria.